

# Eumaloh

**FLOOR TYPE TRAVELING COLUMN MEDIUM & SMALL  
SIZED HORIZONTAL MILLING CENTERS**



**MB Series**

**CE**

**EMC / CE / ISO 9002 CERTIFIED**

**A PROFESSIONAL CNC MACHINES MANUFACTURER**

# Traveling column horizontal milling

Significant technical features and advantages of MB series floor type horizontal milling machines :

- Large travel choices : X axis : 1260mm~8000mm, Y axis : 900mm~1500mm, Z axis : 800mm~1200mm
- Travelling column on 3 axis & fixed table standard design for an almost no weight limit work piece.
- Pendulum machining reduces much more down time than traditional twin pallet changer system.
- Extra long fixed table up to 8 meters for ease of workpiece location and setting.
- Much more expansion possibility to suit individual applications, such as additional milling heads, table group, Automatic tool changer and CNC rotary tables etc. up to 5 axis simultaneous.

## ***MB-1500***



► **MB-1500**

Without any table but with 24 TOOLS ATC.

# machine



► Twin rotary tables, loading/unloading another workpiece is possible while spindle is working.

## ***MB-1500***



► **MB-1500**

1500/900/800mm travel, 15kw motor, 6000rpm, #50 taper, 20000kg and with optional full guard & 60 arm atc & 2 index tables.

# MB-1500



- ▶ Door opening is wider than index table width with ease operation of workpiece setting even from top crane, the sliding roof keeps chip, water and nose inside of guarding.



- ▶ 3 side windows on left side guarding for easy monitoring machine every movement. MB-1500 machine with 24 ATC, 1200mm square index table.

# ***MB-1500***



VH-2 automatic 2 positions milling head, BT#50 / 3500RPM



- ▶ MB-1500 machine with 32 ATC, 1200mm square index table, automatic vertical & horizontal head

# ***MB-2500***



- ▶ With 2500x900x800mm travel, 18.5kw spindle motor, 800x800mm integrated indexing table.



- ▶ With 2500x1200x800mm travel, 7.5kw built-in 8000 rpm motor, #40 taper, 12 atc, auto. vert/hori head, integrated  $\varnothing$ 800mm rotary table.

# ***MB-3200***

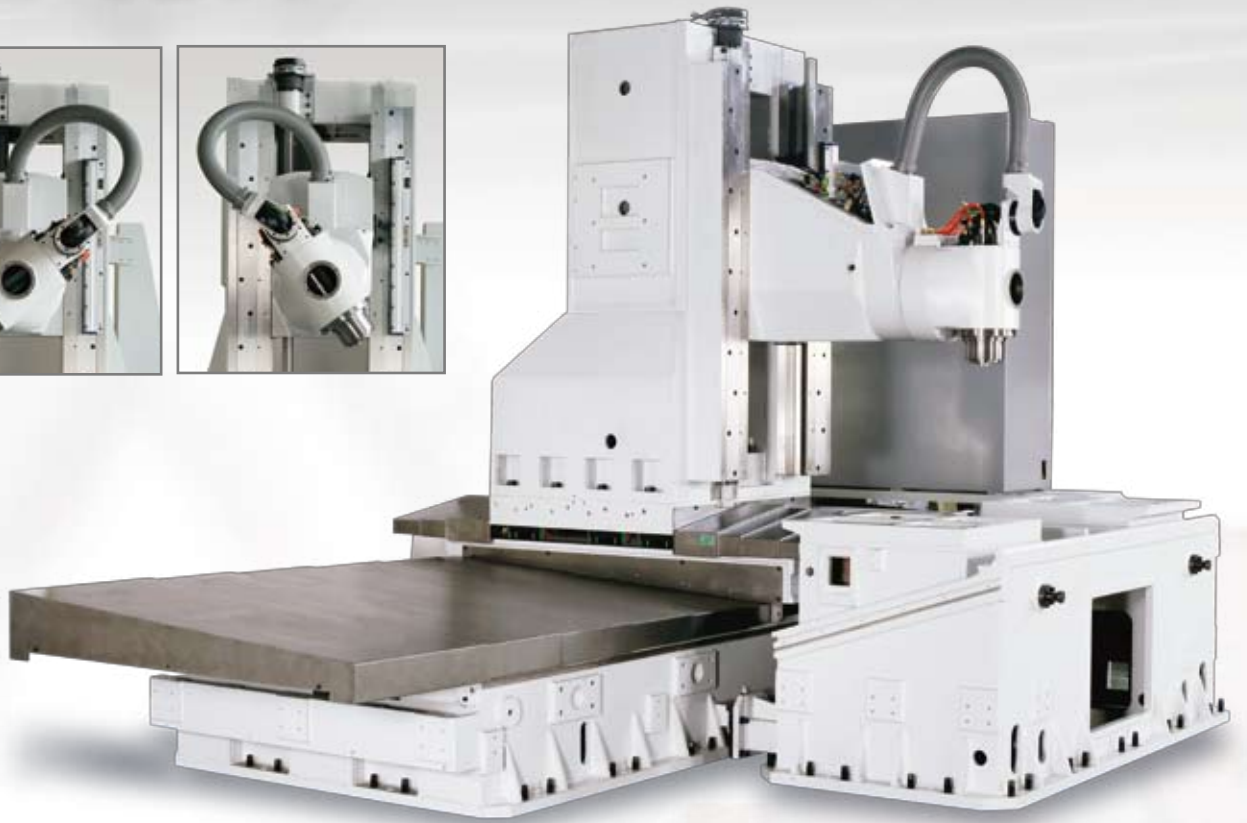


- ▶ Heavy machine frame for MB-3200 with universal milling head & 24 ATC



- ▶ MB-3200 with Optional universal milling head, 24 stations ATC, Heidenhain iTNC - 530 control.

# MB-3200



▶ Heavy machine frame for MB-3200 with left & right swivel head



▶ 3200 / 900 / 800mm travel, swivel head left & right  $\pm 120$  deg. BT#40 / 14000RPM



# MB-3200



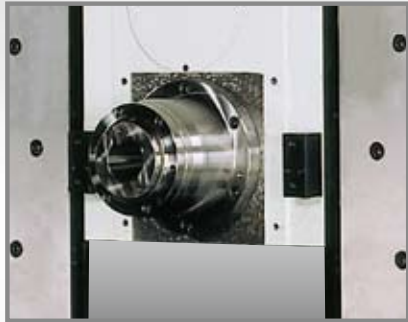
- ▶ Heavy machine from for MB-3200-5XC with universal swivel head



- ▶ 3200 / 1200 / 1500mm travel, universl head, HSK-A100 / 12000RPM, 800mm dia. integrated torque table

# Various versatile options to

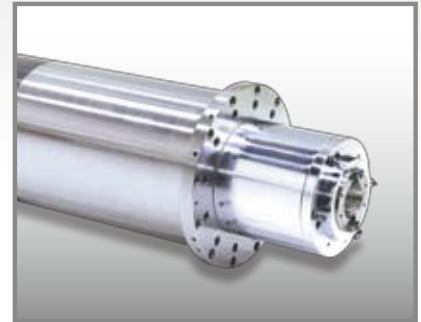
## SPINDLE NOSE :



standard nose to column 250mm



optional long nose to column 350mm



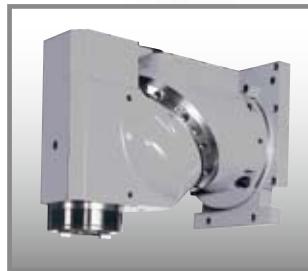
BT#50 / 1000RPM / 30kw / 350Nm / long nose motor spindle.

## MILLING HEADS :

Attachment type, removable :



**VAR3**  
manual rotation universal milling head BT#50 / 3000RPM



**VH-2**  
automatic vertical & horizontal 2 positions, BT#50 / 3500RPM

Built in type, non-removable :



**VH-2.5 & VH-1**  
automatic index 2.5° or 1° on two axis, BT#50 / 3500RPM



**VH-S**  
swivel type milling head, BT#40 / 29.3KW / 35KW / 70Nm / 160Nm / 14000RPM / +/-110°



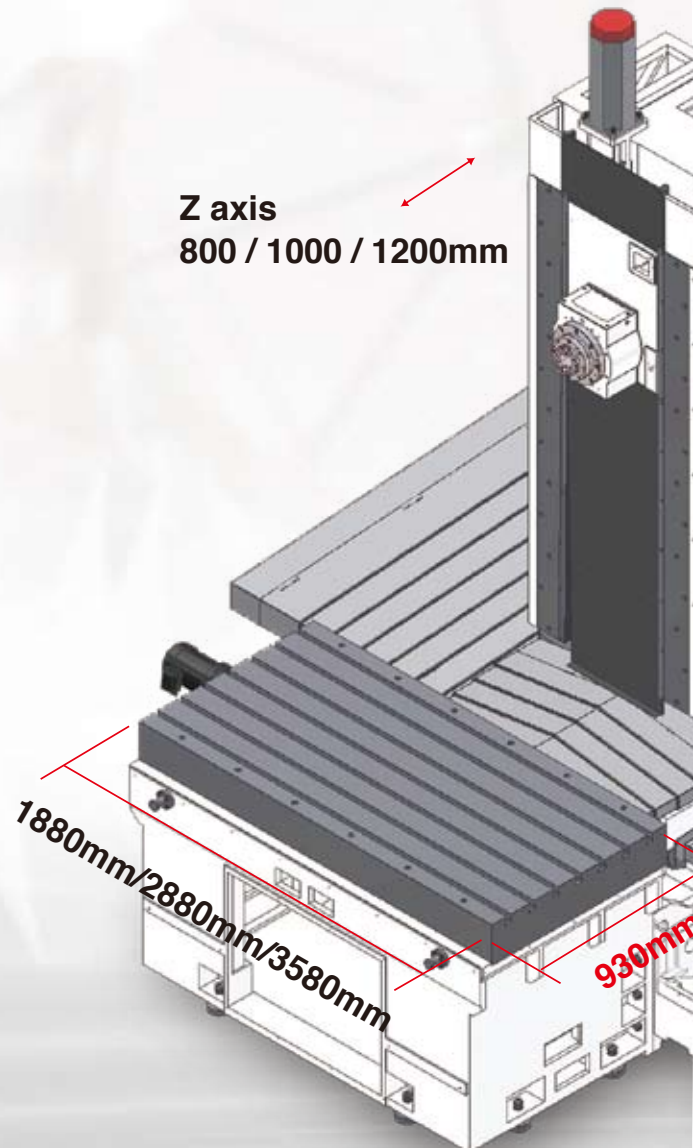
**VH-U**  
universal type milling head, HSK-A100 / 34KW / 42KW / 160Nm / 220Nm / 10000RPM



**VH-F**  
fork type milling head, HSK-A100 / 34KW / 42KW / 160Nm / 220Nm / 10000RPM / +/-105°

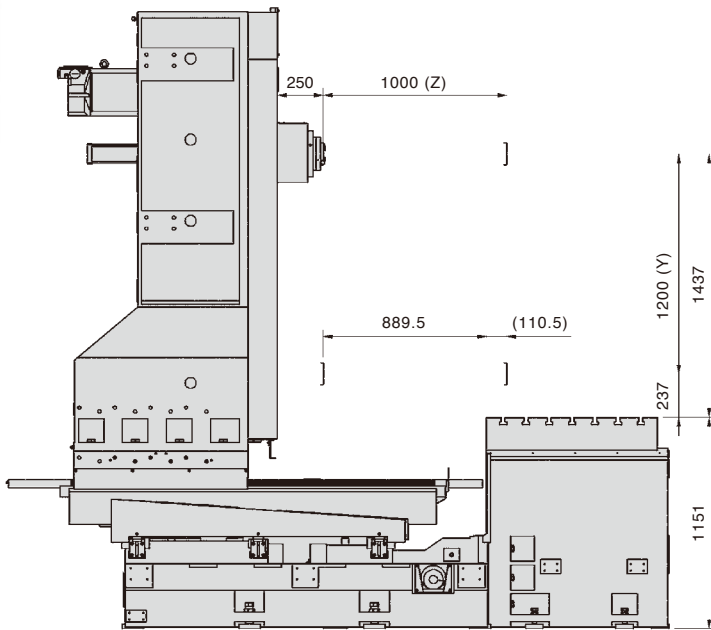
## MB Standard

Z axis  
800 / 1000 / 1200mm

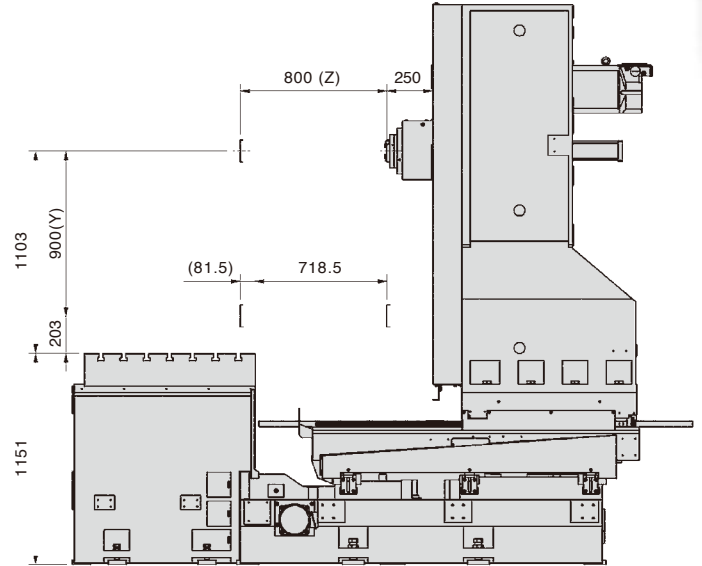


# General side view dimension :

## Side views :

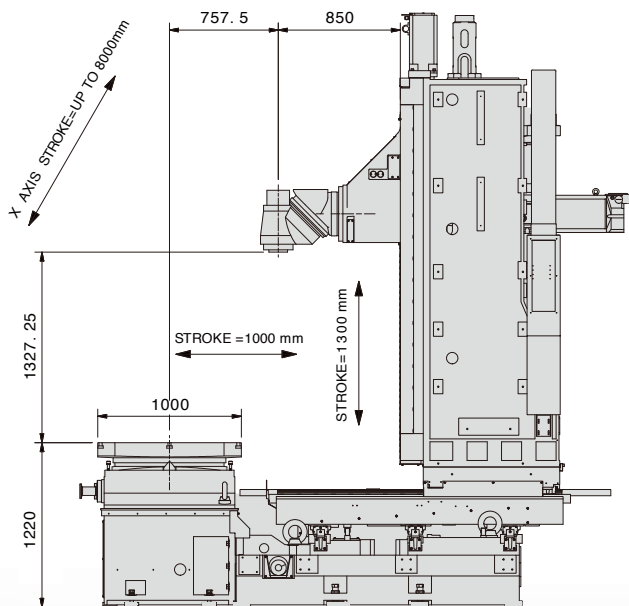


► Y Z axis with optional longer travel

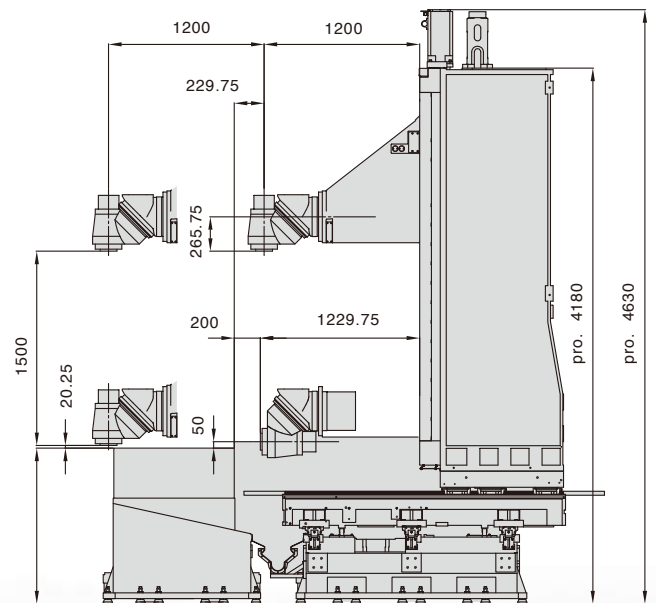


► Y Z axis with standard travel

### ▼ With optional VH-2.5 head :



► Machine with VH-2.5 automatic milling head, 1000mm cross travel, 1300mm vertical travel and 850mm throat distance.



► Machine with VH-2.5 automatic milling head, 1200mm cross travel, 1500mm vertical travel and 1200mm throat distance.

# MB series horizontal milling machines :

UNIT : MM

| MODEL  | UNIT       | MB-1500  | MB-2500    | MB-3200    |
|--|------------|--|------------|------------|
| <b>TABLE:</b>                                |            |  |            |            |
| OVERALL SIZE                                 | MM         | 1880 X 930   | 2880 X 930 | 3580 X 930 |
| T SLOTS (SIZE X NO X PITCH)                  | MM         | 22 X 7 X 125   |            |            |
| MAXIMUM LOADING                              | KG         | 10000  | 18000      | 25000      |
| <b>TRAVEL:</b>                               |            |  |            |            |
| XYZ  | MM         | 1500 / 2500 / 3200 X 900(1200,1500) X 800(1000,1200) |            |            |
| <b>DISTANCES :</b>                           |            |  |            |            |
| SPINDLE NOSE TO TABLE EDGE                   | MM         | -81.5 ~ 718.5 (-110.5 ~ 889.5)                       |            |            |
| SPINDLE CENTER TO TABLE TOP                  | MM         | 203 ~ 1103 ( 237 ~ 1437 )                            |            |            |
| SPINDLE NOSE TO COLUMN SURFACE               | MM         | 250 (350)  |            |            |
| FLOOR TO TABLE                               | MM         | 1151   |            |            |
| <b>SPINDLE &amp; AXIS MOTOR:</b>             |            |  |            |            |
| SPEED  | RPM        | 6000   |            |            |
| TAPER  | BT#        | 50   |            |            |
| MOTOR  | KW         | 15KW / 18.5KW  |            |            |
| X / Z AXIS                                   | NM         | 22 / 22  | 30 / 22    | 30 / 22    |
| Y AXIS                                       | NM         | 22 WITH BRAKE  |            |            |
| <b>FEEDRATE:</b>                             |            |  |            |            |
| CUTTING FEEDRATE                             | MM / MIN   | 1-5000   |            |            |
| RAPID FEEDRATE                               | M / MIN    | 10 (15)  |            |            |
| MINMUM SETTING                               | MM         | 0.001  |            |            |
| <b>AUTOMATIC TOOL CHANGER ( OPTIONAL ) :</b> |            |  |            |            |
| TYPE OF ATC                                  |            | SWING ARM WITH RAIL                                  |            |            |
| NO.OF ATC                                    | TOOLS      | 24,32,40,60  |            |            |
| MAX.TOOL (DIA / LENGTH)                      | MM         | 250 / 300  |            |            |
| MAX. TOOL WEIGHT                             | KG         | 15 (25)  |            |            |
| <b>BALLSCREWS ON X / Y/ Z AXIS :</b>         |            |  |            |            |
| DIAMETER X PITCH                             | MM         | 63 / 50 / 50 X 10                                    |            |            |
| PRECISION CLASS (C3)                         | MM / 300MM | 0.008  |            |            |
| <b>COOLANT &amp; LUBRICATION :</b>           |            |  |            |            |
| COOLANT MOTOR POWER                          | KW         | 0.86   |            |            |
| COOLANT TANK VOLUME                          | L          | 200  | 350        | 350        |
| COOLANT MOTOR CAPACITY                       | L / MIN    | 20   |            |            |
| LUBRICCATION MOTOR POWER                     | WATT       | 25   |            |            |
| <b>ACCURACY : ( JIS 6338 )</b>               |            |  |            |            |
| POSITIONING                                  | MM         | ±0.005MM / 300MM                                     |            |            |
| REPEATABILITY                                | MM         | ±0.003MM   |            |            |
| <b>MISCELLANEOUS :</b>                       |            |  |            |            |
| PNEUMATIC REQUIRED                           | KG         | 7  |            |            |
| POWER REQUIRED                               | KVA        | 40   |            |            |
| MACHINE NET WEIGHT                           | KG         | 21000  | 25000      | 30000      |

Note : above specifications may change without notice

( ) OPTION

## STANDARD FEATURES & ACCESSORIES

- |  |                                     |
|--|-------------------------------------|
| 1.PROGRAMMABLE COOLANT SYSTEM            | 7.LEVELLING BOLTS & PADS            |
| 2.AUTOMATIC LUBRICATION SYSTEM           | 8.BT#50 SPINDLE                     |
| 3.SPINDLE AIR BLAST SYSTEM               | 9.PRE-EXTENSIONED BALLSCREWS        |
| 4.WORKING LAMP                           | 10.RS-232 TERMINAL INTERFACE PORT   |
| 5.ALARM LAMP FOR ABNORMAL SITUATION      | 11.MACHINE & CONTROL MANUALS        |
| 6.INDICATION LAMP FOR DWELL & END OF JOB | 12.TOOLBOX WITH SPANNERS & WRENCHES |

**CNC CONTROLS AVAILABLE: FANUC, HEIDENHAIN, SIEMENS**

# increase your productivity:

## ATC :



1. 24 station fixed on traveling column, horizontal tool changer

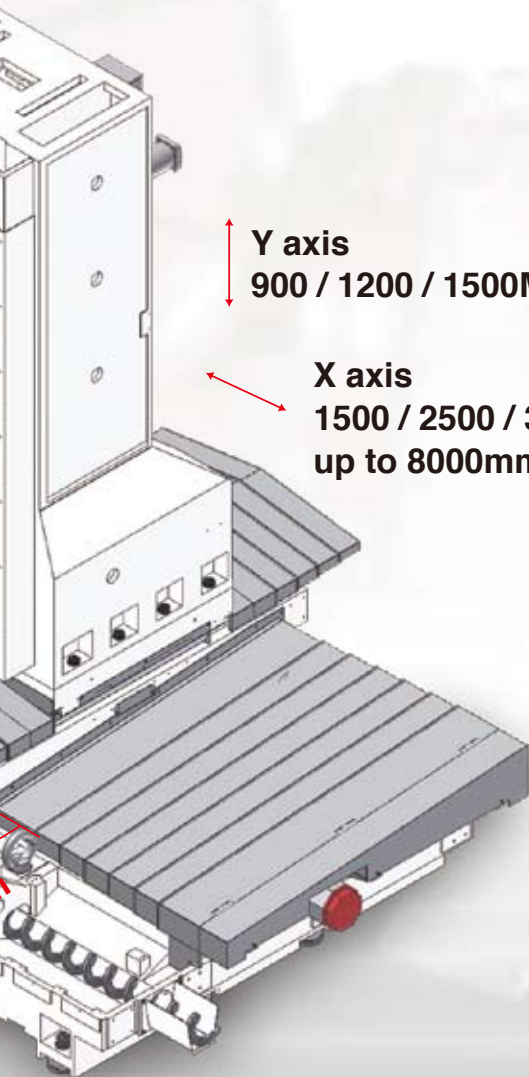


2. 40,60,90 stations fixed on floor, horizontal tool changer



3. 24 stations fixed on traveling column, vertical tool change.

## Feature



**Y axis**  
900 / 1200 / 1500MM

**X axis**  
1500 / 2500 / 3200mm  
up to 8000mm

## TABLE :

standard plain fixed table or following optional tables :



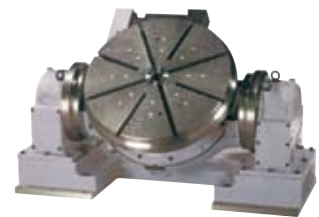
1.  $\Phi 610\text{mm}$  /  $\Phi 800\text{mm}$  /  $\Phi 1000\text{mm}$  rotary table integrated into standard long fixed table.



2.  $\Phi 1650\text{mm}$  /  $0.001^\circ$  / 8000kg load / CNC rotary table



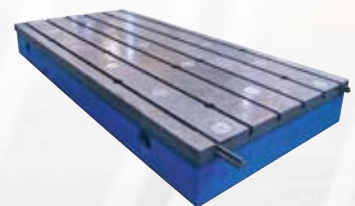
3. 1600 B axis rotary table with 1500mm V axis travel, 8 tons load



5. two axis tilting rotary tables  $\Phi 630\text{mm}$  or  $\Phi 800\text{mm}$



4. Angle plate various size from 400mm square up to 1600mm square



6. Various floor plates



# EUMACH FAMILIES



◦ **VMC-2150**  
Vertical machine center  
600MM ~ 3200MM X axis travel



◦ **TVMC-2000 / 5000**  
Moving column machine center  
2320MM & 5320MM X axis travel



◦ **LBM-1500**  
High speed bridge type machine center  
1100MM ~ 2200MM X axis travel



◦ **MH-500**  
Horizontal machine center  
720MM x 650MM x 650MM travel



◦ **EBM-2150**  
5 Face machine center  
1400MM ~ 3200MM X axis travel



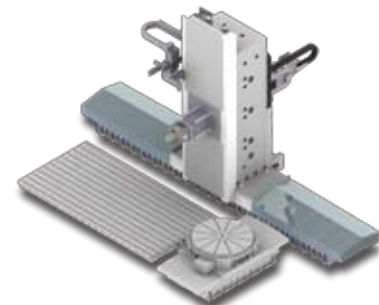
◦ **UMC-1000**  
5 Axis machine center  
1000 / 800 / 700MM, BT#40,  
14000RPM



◦ **DVM-4025**  
5 Face & double column machine center



◦ **FBE-1500**  
Universal milling machine  
1500MM ~ 4000MM X axis travel



◦ **FBM-4025**  
Heavy duty floor type boring  
machining center

**Eumach Co.,LTD.**

★ Specifications subject to change without notice.  
Catalogue No.A1080203

2, YING LIN LANE, HE-SHENG STREET, SHI-GANG DISTRICT,  
TAI-CHUNG CITY 422, TAIWAN, R.O.C.

TEL:886-4-25810031 FAX:886-4-25810003

E-mail:eumach.coltd@msa.hinet.net ; eumach@ms8.hinet.net

http://www.eumach.com