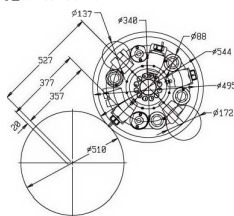


刀塔有效工作範圍 TURRET WORKING CAPACITY / RANGE

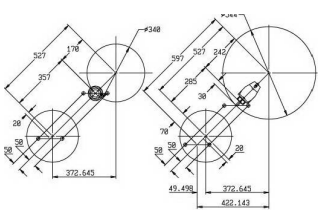
單位UNIT: mm

510YVDI 40 / 8

刀具規格 Tool specification: 25 x 25 mm
孔內刀座 I.D. tool holder: Ø50 mm

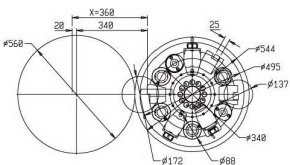


510YVDI 40 / 8 Y axis



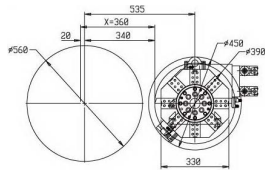
560VDI 40 / 8

刀具規格 Tool specification: 25 x 25 mm
孔內刀座 I.D. tool holder: Ø50 mm



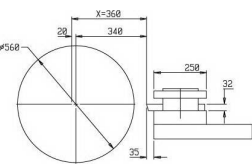
560-V8

刀具規格 Tool specification: 25 x 25 mm
孔內刀座 I.D. tool holder: Ø50 mm

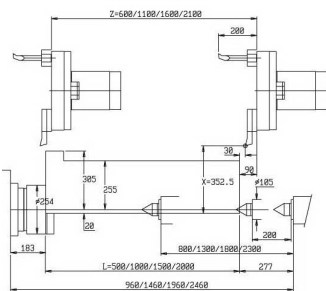


560-H4

刀具規格 Tool specification: 32 x 32 mm



加工行程 TURNING TRAVEL



規格表 SPECIFICATIONS

項目 ITEM	機型 MODEL	
加工能力 Working Capacity	床面旋徑 Swing over bed	Ø710
	板架旋徑 (最大加工) Swing overcrossside (Max. turning)	Ø560 Ø510
	最高心間距離 Dist. Between centers	600 / 1100 / 1600 / 2100 / 2600 / 3100
	最大加工長度 Max. turning length	500 / 1000 / 1500 / 2000 / 2500 / 3000
	主軸適合最大加工棒材 (液壓夾頭) Spindle bore Max. turning bar (hyd. chuck)	Ø70 / Ø90 / Ø110 / Ø117 / Ø142
	主軸通孔徑 Spindle bore	Ø83 / Ø105 / Ø130 / Ø160
主軸箱 Headstock	最高主軸轉速 (三段) Max. spindlespeed (3-step)	rpm 40-2000 / 40-1500 / 30-1000
	主軸鼻端 Spindle nose	A2-8 A2-11
	主軸中心高 Center hei ht of spindle	mm 360
行程 Travel	主軸C軸分度 Spindle/dividn head of C axis	deg 0.001
	X軸行程 X axis travel	mm 360
	Z軸行程 Z axis travel	mm 600 / 1100 / 1600 / 2100 / 2600 / 3100
進給 Feed	Y軸行程 (45°) Y axis travel (45°)	mm/min 10000
	X軸向快速進給 X axis rapid feed	mm/min 16000
	Z軸向快速進給 Z axis rapid feed	mm/min 10000
	Y軸向快速進給 Y axis rapid feed	mm/min 10000
	X-Z軸切削進給 X, Z axis cutting feed	mm/min 0-5000
	Y軸切削進給 Y axis cutting feed	mm/min 0-5000
滾珠導螺桿 Ball lead screw	X軸 (直徑×節距) X axis (diameter × pitch line)	Ø50×P=12 / Ø50×P=16
	Z軸 (直徑×節距) Z axis (diameter × pitch line)	Y: Ø32 × P=5
刀架 Tool holder	油壓刀塔 Hyd Turret	V8 / V12 (Opt.)
	動力刀塔 Live turret	V8 (VDI 40) (Opt.) V8 (VDI 40)
尾座 Tailstock	尾座心軸直徑 Quilldia	Ø105
	心軸內孔直徑 Quill I.D. taper	MT#5
	心軸行程 Quill travel	mm 200
馬達 Motor	主軸馬達 Main spindle motor	kw 15 / 18.5
	X軸伺服馬達 X axis servo motor	kw
	Z軸伺服馬達 Z axis servo motor	kw
	Y軸伺服馬達 Y axis servo motor	kw
	銑削軸馬達 Milling axis motor	kw 3.7 / 5.5
	潤滑泵 Lubricating pump	25
控制系統 Electronic control system	切削液泵 Coolant pump motor	BAR
	主軸油冷泵 Coolant pump for spindle	HP 1/2
	油壓箱馬力 Pressure-oil tank/horsepower	HP 2
控制器 Controller	控制軸數 Controllable axis	FANUC / MITSUBISHI FAGOR / SIEMENS, 發那科 / 三豐 / 發格 / 西門子

*本公司所有設計之圖紙，如有更改或改裝將視情不另行通知，但不影響所製之機械品質。
*All specification are designs are subjected to change without notice

標準附件	特別附件	STANDARD ACCESSORIES	OPTIONAL ACCESSORIES
• 電腦控制系統	• 三爪夾頭	• Controller	• 3 jaw chuck
• 主軸油壓自動換檔	• 四爪夾頭	• Headstock Hyd Auto chng e	• 4 jaw chuck
• 潤滑系統 × 2	• 三爪油壓夾頭	• Lubricating system	• 3 jaw hyd. chuck
• 刀架裝置	• 主軸後鼻端+夾頭	• Coolant system	• Rear spindle/face with chuck
• 工作燈	• V8刀塔 (適用於 560機型)	• Work lamp	• V8 Hyd. turret (for 560)
• 全罩機殼	• 動力刀塔VDI 40/8 (適用於 560機型)	• Full splash guard	• Live turret VDI 40/8 (for 560)
• 手動式手輪	• 尾座心軸油壓式	• Manual two steps ta	• Hyd. tailstock quill
• 工具及工具箱	• 鑽承式刀架	• Remote MPG	• Brass follow rest
• 機型 510Y的	• 油壓式中心架	• Tools and toolbox	• Bearing type steady rest
• 磁屑輸送機	• 磁屑輸送機	• Model 510Y with VDI 40/8 driven tool system	• Hydraulic steady rest
• CE/CSA認證	• CE/CSA認證		• Chip conveyor
• 變壓器	• 變壓器		• CE/CSA approval specification
			• Transformer



CE ISO 9001

Powerful Precision CNC Lathes



強力平床式CNC車床 POWERFUL FLAT BED CNC LATHES

560 / 510Y

Max. turning length 最大加工長度: 500 / 1000 / 1500 / 2000 mm
Spindle bore 主軸通孔徑: Ø83 / Ø105 / Ø130 / Ø160



Headstock
主軸箱



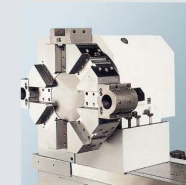
Rear spindle support chuck
主軸後端支撐夾頭



Spindle headstock oil cooler & Hyd. System
主軸頭油壓系統+主軸頭油冷器



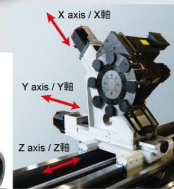
Four way electric turret
四方電動刀塔



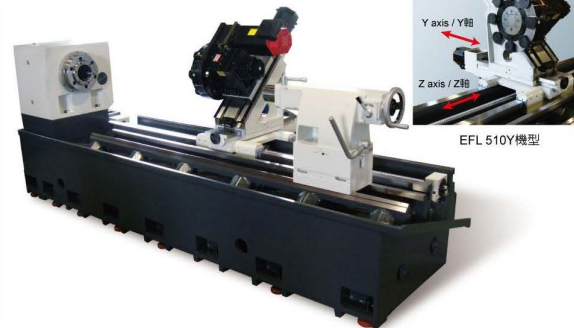
V8 turret
V8刀塔



VDI 40 Driven tool system
VDI 40動力刀塔



EFL 510Y機型



特性

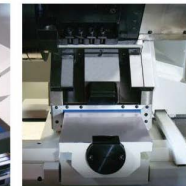
- 床台底座為一體成型，機台結構高剛性，能承受重切削要求，荷重佳。
- 所有鑄件材料採用 FC-30 並經高週回火處理，不變變形。
- 主軸箱為三點支撐設計，並經力學平衡校正，齒輪級數 3，齒寬大，並有三段變換速換檔，主軸轉速為低檔時，仍可以全馬力輸出，切削力大，適合重切削，並附有主軸油冷機，降低齒輪升溫保精度。
- 主軸通孔直徑 Ø83mm, Ø105mm, Ø130mm, Ø160mm，可依加工棒材大小選擇，並可加裝主軸後方安裝夾頭，適合加工長棒材，以確保加工安全性。
- 床身為四軌道，X、Y、Z軸為方形軌道設計，Z軸滾珠導軌位於軌道中間受平均力，精度佳。
- 560機型可選用四方電動刀塔、V8或V12刀塔，以應加工需求及效率。
- 510Y機型為選配VDI40動力刀塔，附有Y軸(行程±50mm)，車載複合加工的更佳選擇。
- 採用中央給油潤滑系統方式，能自動潤滑滑動面及滾珠導軌，強制給油以確保精度及壽命。
- 活動門之視窗採內層為強化玻璃，外層為PC，以防止工件飛出，安全性高。

FEATURES

- The bed is designed as box type with rigid structures for ensure heavy duty cutting & excellent heavy loading capability.
- All the main components are made of FC-30 high quality casting and annealing heat treatment for deformation-free.
- Three point support on the spindle and inspected by dynamic balancing, the spindle gear is a module & wide that is very suitable heavy cutting and being with 3 steps hydraulic auto speed shifting. Especially that can be full power output even as the spindle speed at low gear, large cutting forces, and spindle headstock is designed with oil cooler for reduce the temperature of oil ensure accuracy.
- Different spindle bore Ø83mm, Ø105mm, Ø130mm, Ø160mm, can be fitted with optional rear chuck (Opt.) for long workpiece machining.
- Four guide way on the machine & X/ Y / Z axis is square design, Z-axis is correctly at the center of bed for uniform loading, ensuring increased accuracy.
- Model of 560 can be fitted H4 four way electric turret, V8 or V12 turret and driven tool system that enable the machine to fully develop its machining performance.
- Model of 510Y can be fitted VDI 40 drive turret with Y axis (travel ±50mm), which design provides cutting & milling the best choice.
- Adopted central lubricating system which can be lubricated slide way & ball screw the forced lubricating ensure accuracy.
- The visual window of sliding safety door is adopted the reinforced glass at layer and out layer for polycarbonate can be protected the failed workpieces hi-safety.



Four-track design
(Z axis with square design)
四軌道設計 (Z軸方形軌道)



X / Y axis with square design
X / Y軸方形軌道



2 Steps manually tailstock
手動式雙段尾座