

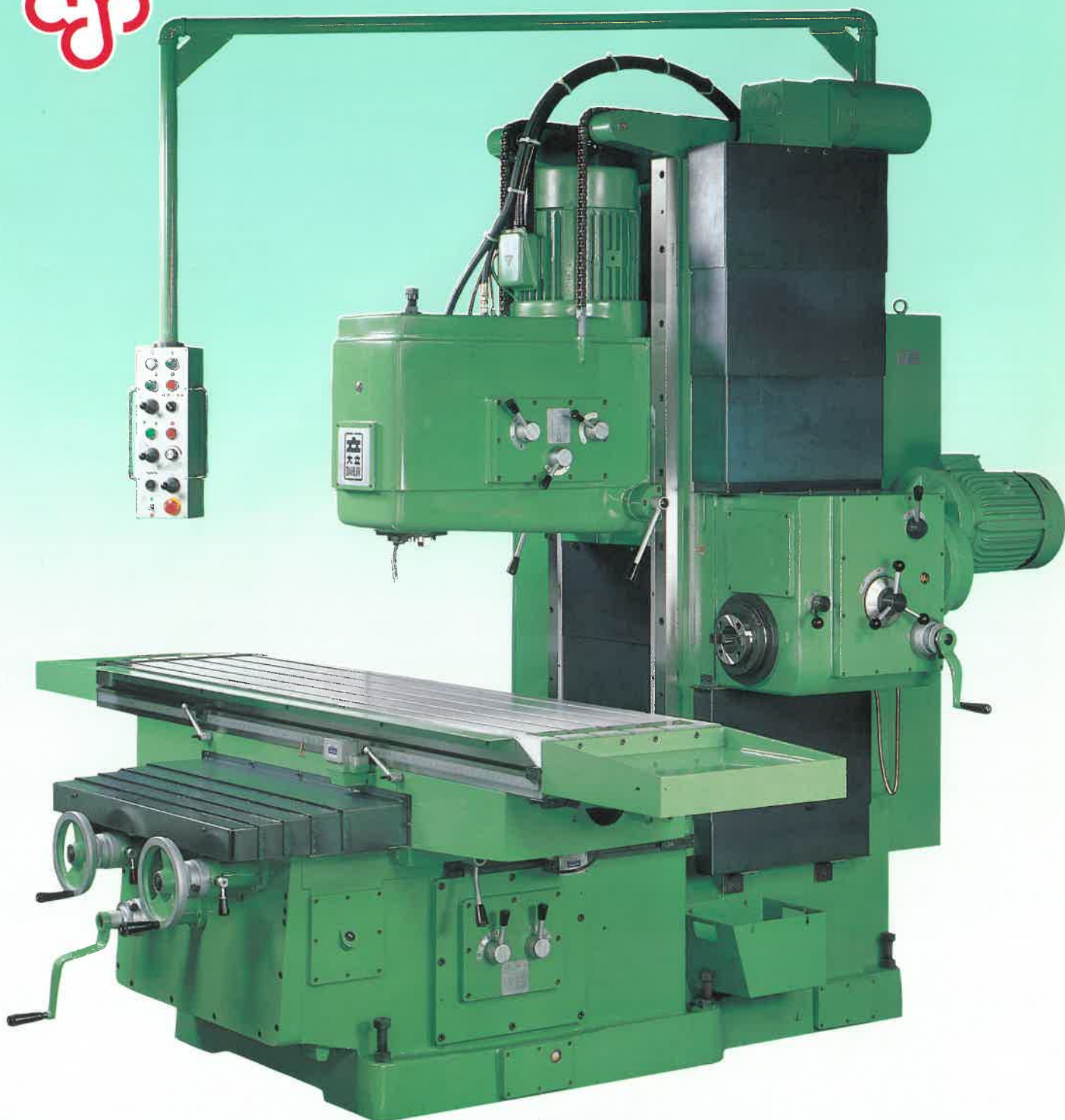


床型強力立式銑床

HEAVY DUTY BED TYPE
VERTICAL MILLING MACHINE



DL-V1600



大立機器工業股份有限公司

總公司：台中縣烏日鄉 41407 中山路一段和平巷 150 弄 27 號
電話：(04)3372621~5(5線) 電報掛號：“DALI”WUJIH

DL-V 1600 床型強力立式銑床

DL-V 1200 HEAVY DUTY BED TYPE VERTICAL MILLING MACHINE

大立V1200及V1600為床型精密立式銑床。結構強固，工作範圍廣，切削力強大且操作簡便，最適重合切削之加工。

DAHLIH V1200 & V1600 are precise build bed type vertical milling machine. With rugged construction, big metal removal capacity and ease of operation, the V1200 & V1600 give more value for heavy duty machining.

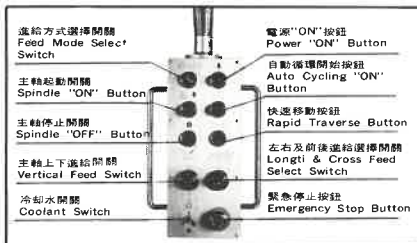
● 橫主軸頭特性：(僅供DL-V1600)

1. 主軸傳動系統為全齒輪式，使用 7 1/2 HP馬達，並有重量平衡裝置，切削性能優越。
2. 採用180mm直徑的主軸套管做前後運動，動作平滑，剛性大，極適於模具加工及擴孔工作。
3. 橫主軸頭上下移動滑動面和機柱一體，精度良好，可做重切削。

FEATURES OF HORIZONTAL MILLING HEAD (DL-V1600 only)

1. The spindle transmission system is all geared driven by 7 1/2 HP motor with counter-balance unit that provides a superior cutting.
2. By using 180 mm diameter of quill which enables the movement back and forth smoothly and easily. High rigidity and mostly suitable for mould machining and boring.
3. The slideway of horizontal milling head is casting in one piece of column. High precision and makes the heavy cutting easier.

懸吊式電氣控制 Pendant Control



● 特長

1. 工作範圍特大
V1200: 1200 (左右) × 505 (前後) × 600 (上下)。
V1600: 1600 (左右) × 600 (前後) × 720 (上下)。
2. 強力型主軸頭
● 主軸頭為全齒式，配有重量平衡裝置，由 10HP(V1200) 15HP(V1600) 交流馬達驅動，故切削力特強。
● 主軸，方控軸及齒輪均為鉻鋁合金鋼經熱處理硬化，精密研磨而成。(精度在JIS 1級內)。
● 內附濕式電磁剎車，可使主軸立即停止。
3. 機構簡化
● 所有三軸之進給及快速移動均經由濕式電磁離合器控制。
4. 懸吊式電氣控制。
● 所有控制均集中在一懸吊式電氣操作箱上，不但提高生產效率，且減少操作者疲勞。
5. 潤滑系統
● 在主軸頭、進給齒輪箱及各軸傳動系統內之所有齒輪及軸承均經由一自動潤滑系統，連續循環潤滑。
● 所有工作台、鞍座及主軸頭滑動部份，均為集中式潤滑。
6. 左右及前後導螺桿均附有間隙消除裝置。
7. 各傳動軸均附有過負荷離合器裝置。
8. 床台前端裝有伸縮護蓋，可以保護滑軌。

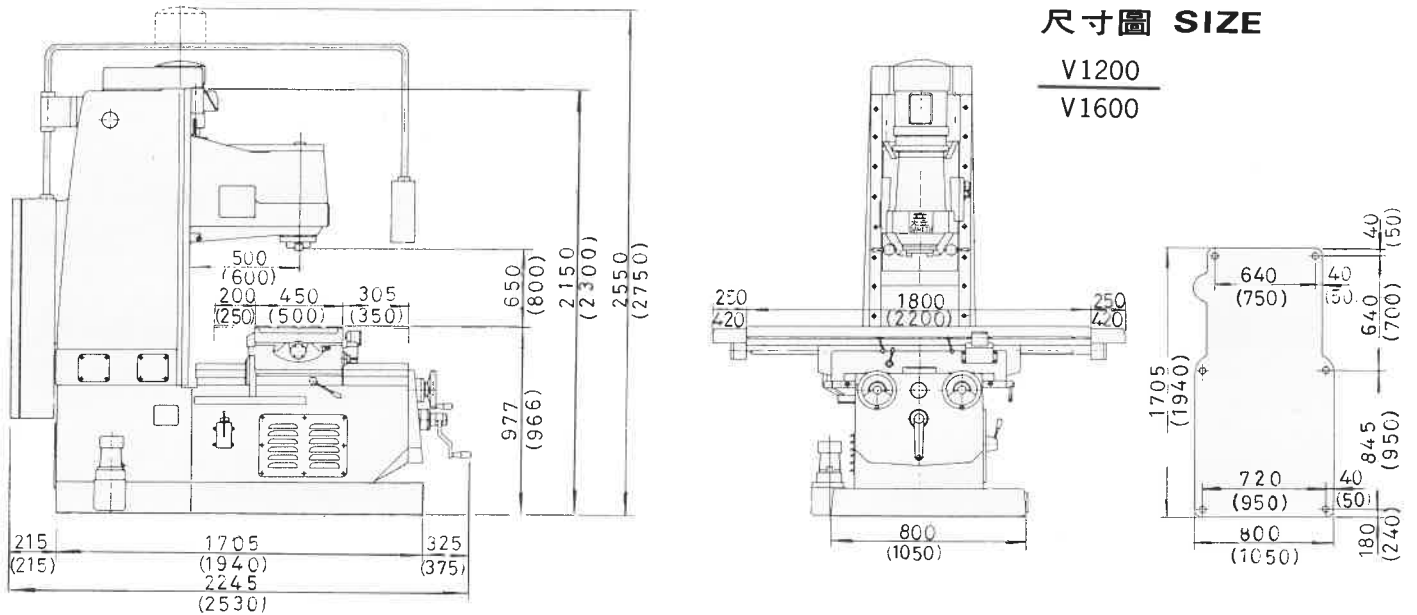
FEATURES

1. Large Capacity
V1200: 1200(X)×505(Y)×600(Z)
V1600: 1600(X)×600(Y)×720(Z)
2. Powerful Headstock
● The all geared counter - balanced Headstock is driven by 10HP (V1200)/15HP (V1600) AC motor.
● Spindle Spline shafts and gears are made of Cr-Mo alloy steel, hardened and precision ground.
● A wet type electro-magnetic brake is incorporated for immediate spindle brakes.
3. Simplified Mechanism
● All three axes feeds and rapid traverse are operated through proven wet type electro-magnetic clutch.
4. Pendant Control
● All controls are centralized on a pendant control panel which increase efficiency and reduces operator's fatigue.
5. Lubricating System
● All gears and bearings inside headstock, feed box and X,Y, Z, transmission section are floodly lubrication continuously by an automatic lubricating system.
● One shoot lubricating system to all slide ways.
6. Backlash Eliminator is fitted as standard to X & Y feed screws.
7. Overload clutch for all three axes.
8. Telescopic cover is fitted on front of cross slideway to keep off chips and coolant.

● 特別附件 SPECIAL ACCESSORIES

<p>① 數字顯示器 X, Y, 或 XYZ Digital Readout X, Y, or XYZ</p>	<p>② 高速平面銑刀 6" 8" 10" Throw-away Face Cutter</p>	<p>③ 平面銑刀柄 NST 50 Face Cutter Arbor</p>	<p>④ 立銑刀夾具 NST 50 End Mill Collets</p>
<p>⑤ 萬能夾具 18mm Clamping Kits</p>	<p>⑥ 自由式虎鉗 100, 140 Free Vise</p>	<p>⑦ 迴轉虎鉗 16" 20" Swivel Milling Vise</p>	<p>⑧ 精密鋼珠導螺桿 X, Y Precision Ball Screws</p>

尺寸圖 SIZE



● 規格 SPECIFICATIONS

型 式	MODEL	V-1200	V-1600	● 標準附件
工 作 台 TABLE				● 標準附件 1. 冷却泵浦裝置……1式 2. 工 具……1式 3. 工具箱……1個 4. 讀尺 各1個 (上下、左右、前後) 5. 敷板 6個 6. 刀軸拉引桿……1支
工作台面積	Working Surface	1800×450 mm	2200×500 mm	
左右行程	Longitudinal travel	1200 mm	1600 mm	
前後行程	Cross travel	505 mm	600 mm	
T型槽(尺寸×槽數×間隔)	T-Slots (Size×Number×Distance)	18mm×5×85mm	18mm×5×95mm	
左右及前後進給(12段)	Longitudinal & Cross feeds (12 steps)	10~1650mm/min	10~1520mm/min	
左右及前後快移速率	Longitudinal & Cross rapid traverse	3000 mm/min	3000 mm/min	
主 軸 MAIN SPINDLE				
主軸頭部上下行程	Headstock travel	600 mm	720 mm	
主軸頭部上下進給(12段)	Headstock feeds (12 steps)	5~825mm/min	5~760mm/min	
主軸頭部上下快移速率	Headstock rapid traverse	1500 mm/min	1500 mm/min	
主軸轉速(12段)	Spindle speeds (12 steps)	60~1720r.p.m.	60~1720r.p.m.	
主軸端孔斜度	Taper of spindle nose	N.S.T.50#	N.S.T.50#	
主軸端至工作台面之距離	Distance of spindle end to table top	50~650 mm	80~800 mm	
軸心至機柱擺動面之距離	Distance of spindle center to column surface	500 mm	600 mm	
橫 主 軸 HORIZONTAL MAIN SPINDLE				
主軸頭部上下行程	Headstock travel	—	530mm	
主軸頭部套管前後行程	Quill travel	—	80mm	
主軸轉速(8段)	Spindle speeds (8 steps)	—	110~840r.p.m.	
主軸端孔斜度	Taper of spindle nose	—	N.S.T.50#	
主軸套管直徑	Quill diameter	—	∅180mm	
主軸頭上下進給	Headstock feeds	—	7~550 mm/min	
軸心至工作台面距離	Distance of spindle center to table top	—	-10~520mm	
立主軸與橫主軸中心距離	Distance between vertical and horizontal spindle centers	—	530mm	
電 動 機 MOTOR				
立主軸	Vertical Main spindle	10HP-4P	15HP-4P	
橫主軸	Horizontal main spindle	—	7.5HP-4P	
工作台進給	Table feed	2HP-4P	2HP-4P	
橫主軸頭進給	Horizontal headstock feed	—	1HP(DC)	
自動潤滑泵浦	Automatic Lubricating pump	¼HP-4P	¼HP-4P	
冷却泵浦	Coolant pump	¼HP-2P	¼HP-2P	
機器重量及包裝 MACHINE WEIGHT AND PACKING				
機械高度(最大)	Max. height	2550 mm	2750 mm	
佔地面積	Floor space	3500×2105mm	4640×2340mm	
淨重(約)	Net weight (Approx)	5000kgs	8800kgs	
包裝後重量(約)	Gross weight (Approx)	5600kgs	9600kgs	
包裝後尺寸(木箱)	Packing measurement(seaworthy wooden case)	2420×2060×2600mm	2650×2500×3050mm	

(上述規格係以60HZ之電源為準) (All specifications are based on 60 HZ power supply)

※ 本公司技術人員不斷的繼續研究改進，因此保有變更設計製造的權利，變更時恕不另行通知。

We are continuously researched and improved, therefore we holds the right to change the design of machines, and all specifications are subject to change without notice.